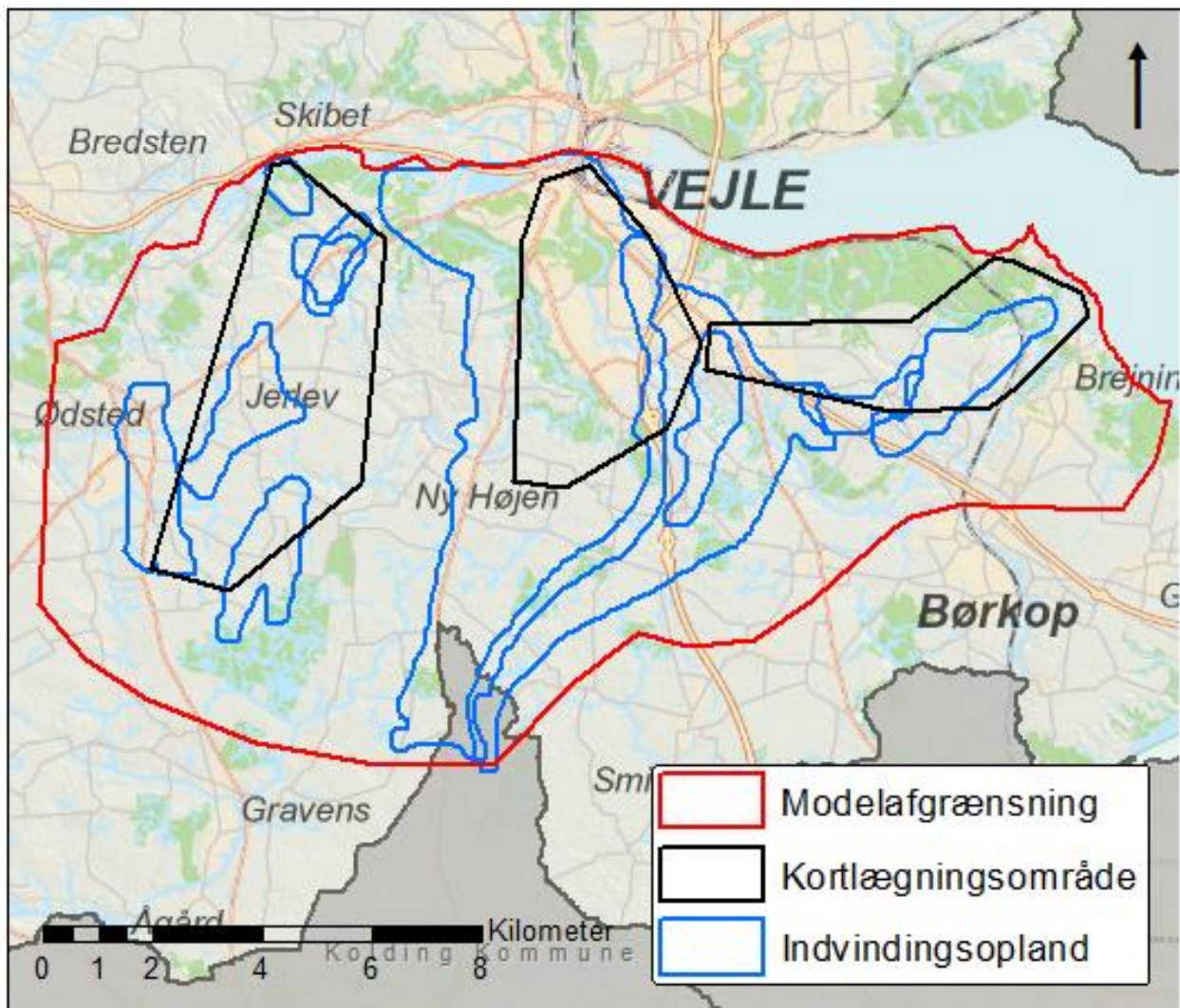




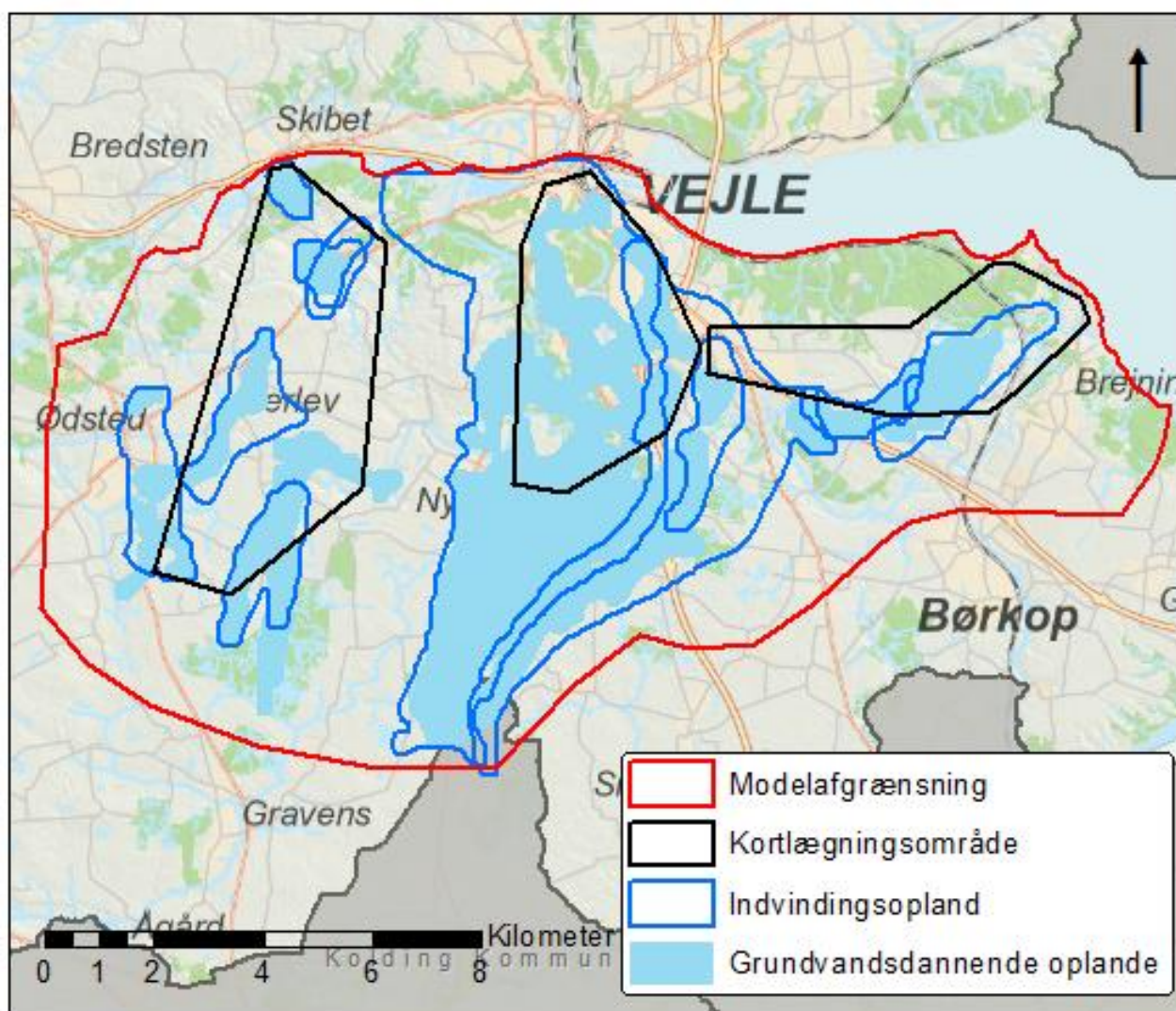
DEL 2 - AREALANVENDELSEN I ANDKÆR OG JERLEV-VEJLE SYD-OMRÅDET 2017



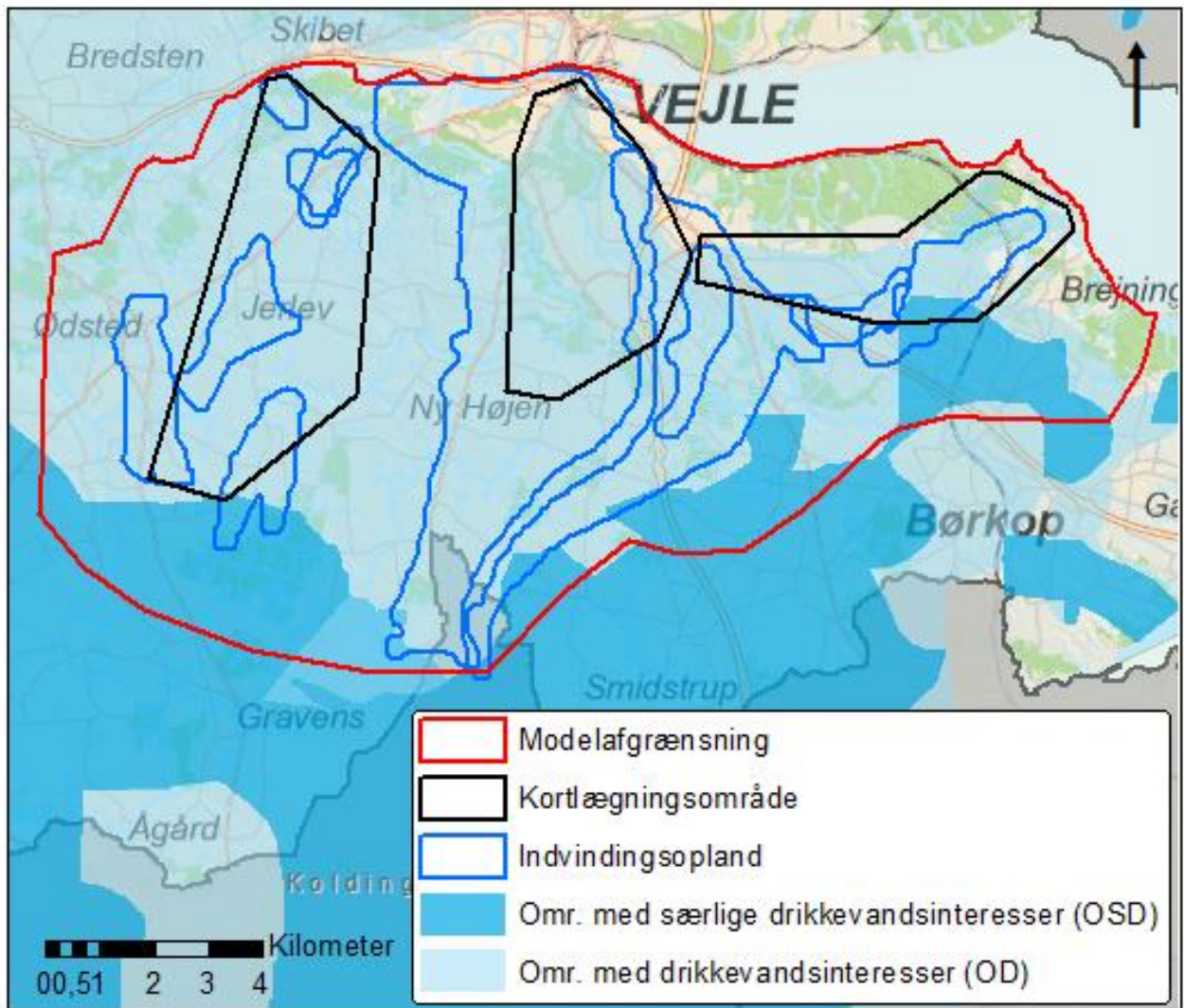
*Modelafgrænsning, kortlægningsområder og indvindingsoplande*

*Modelafgrænsning: Modelafgrænsningen er fastlagt på baggrund af grundvandsspejlets beliggenhed under terræn, vandløbene og Vejle Fjord.*

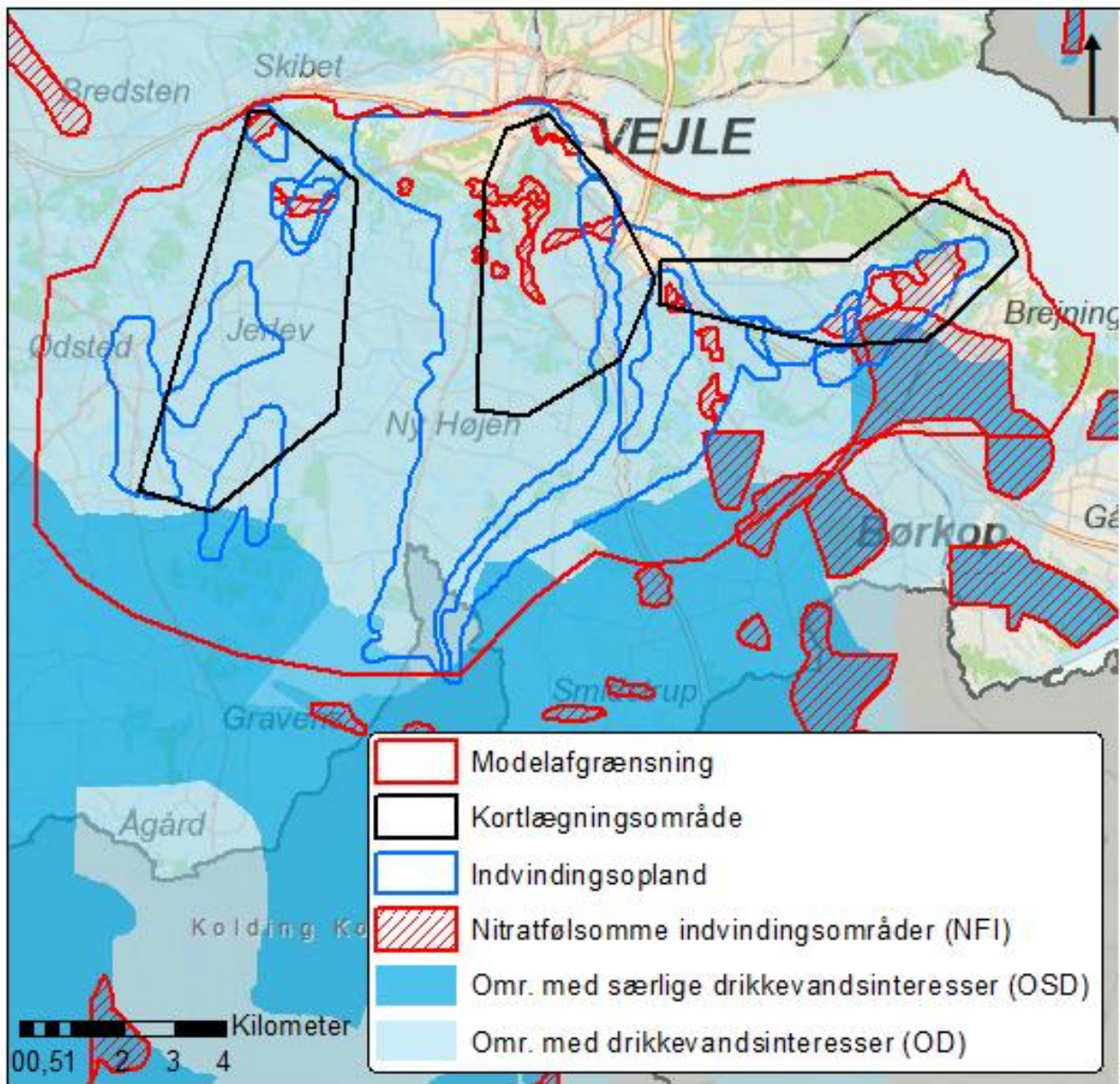
*Kortlægningsområder: Kortlægningsområderne er udpeget der, hvor der er særlige drikkevandsinteresser og hvor der er indvindingsoplande*



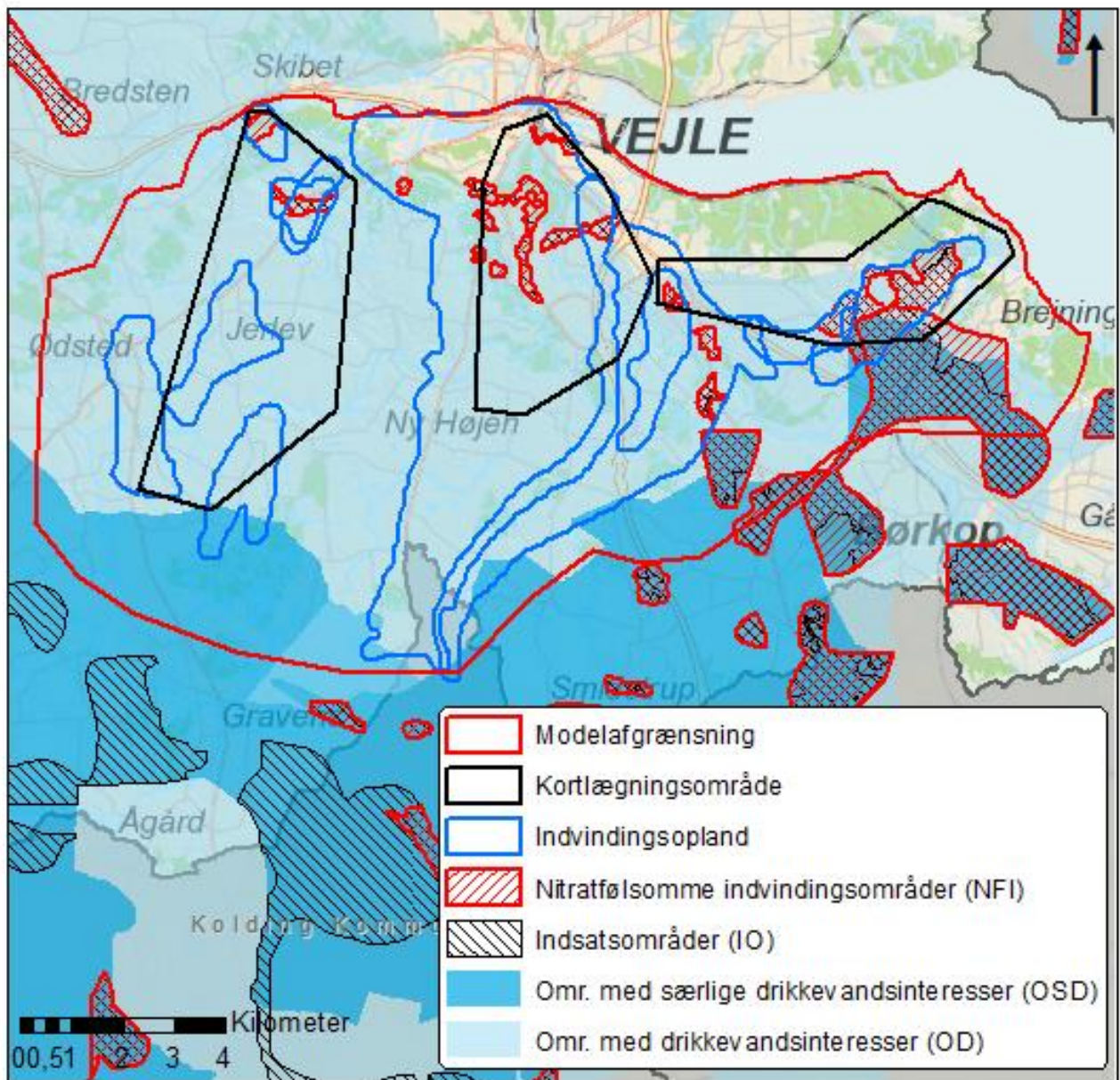
Modelafgrænsning, kortlægningsområder, indvindingsoplande, og grundvandsdannende oplande



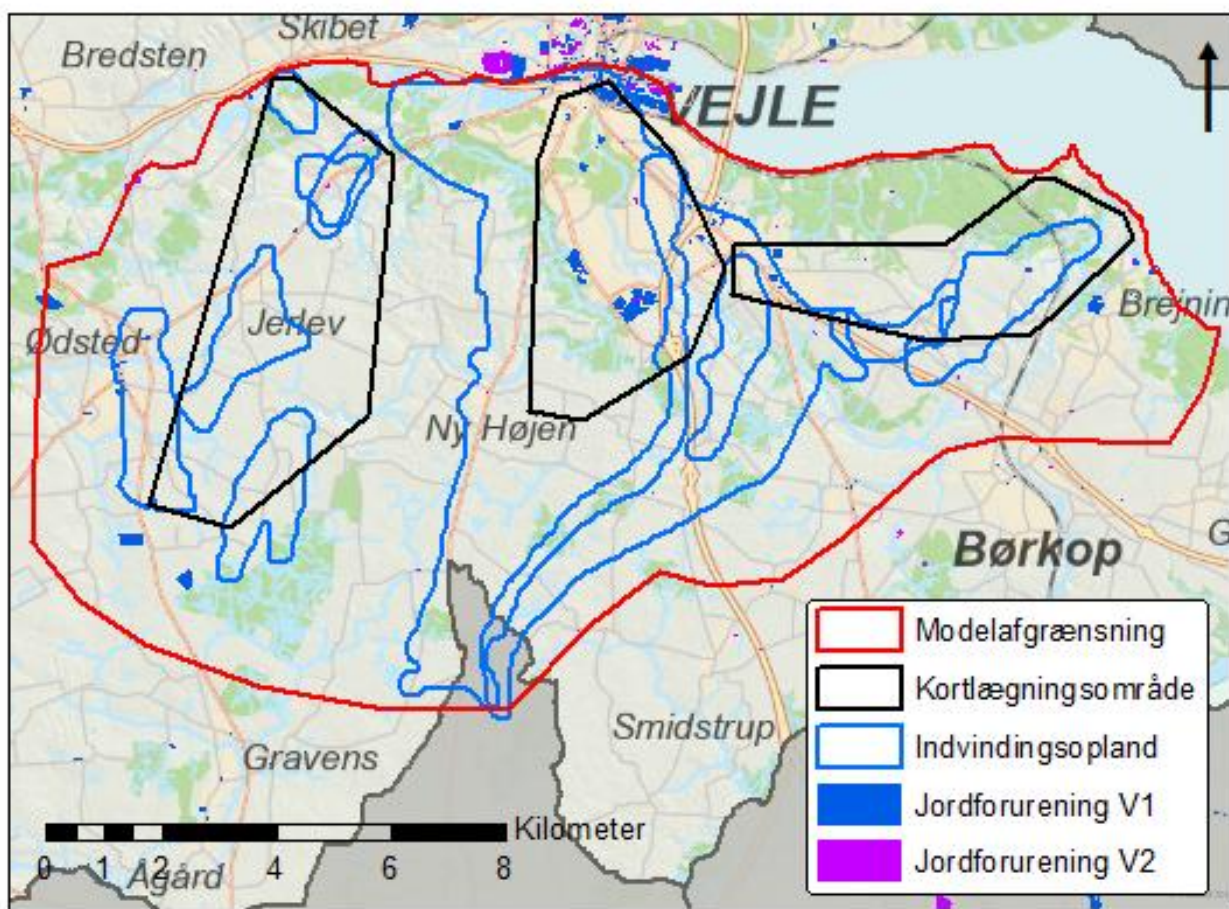
Modelafgrænsning, kortlægningsområder, indvindingsoplande, områder med særlige drikkevandsinteresser og områder med drikkevandsinteresser



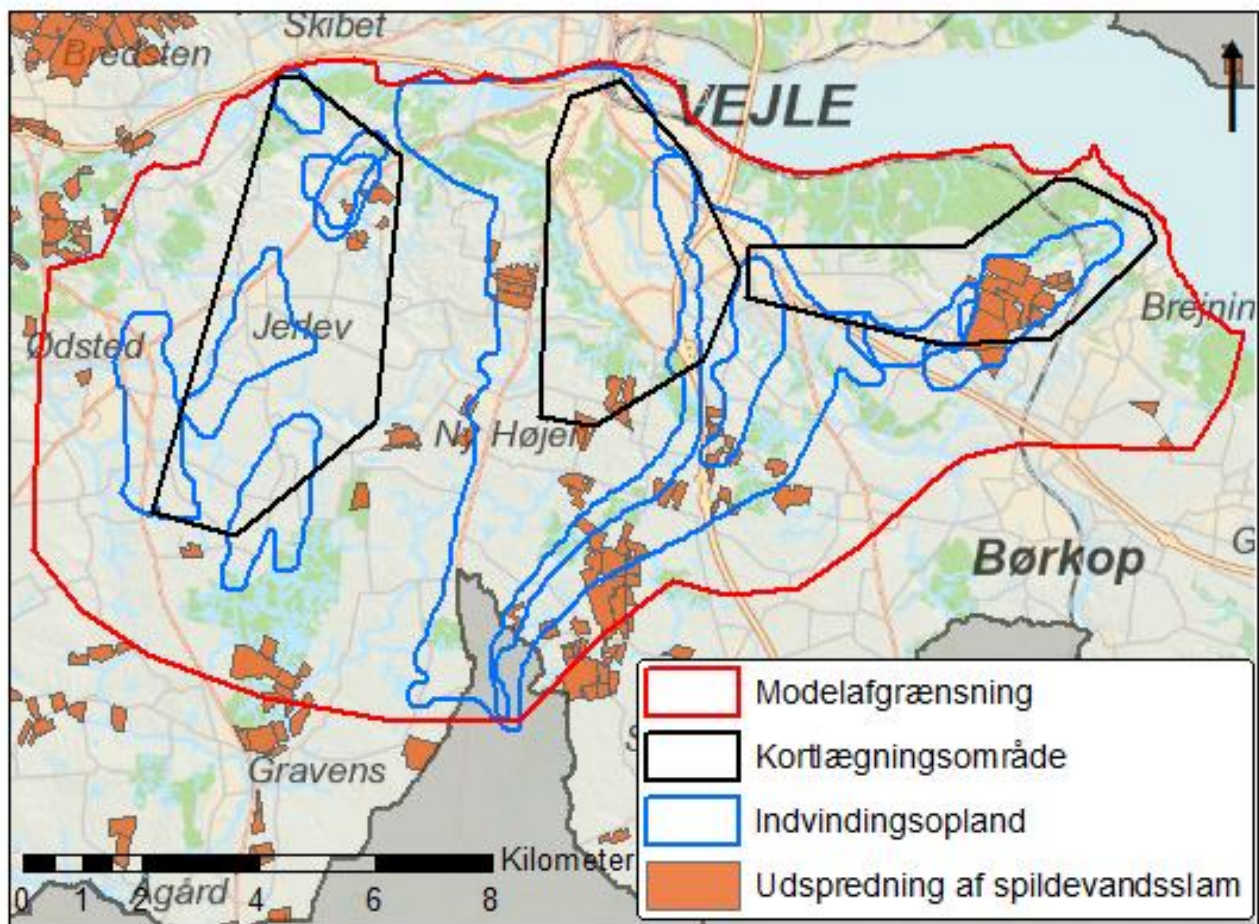
*Modelafgrænsning, kortlægningsområder, indvindingsoplande, nitrutfølsomme indvindingsområder, områder med særlige drikkevandsinteresser og områder med drikkevandsinteresser*



Modelafgrænsning, kortlægningsområder, indvindingsoplande, nitratfølsomme indvindingsområder, indsatsområder, områder med særlige drikkevandsinteresser og områder med drikkevandsinteresser

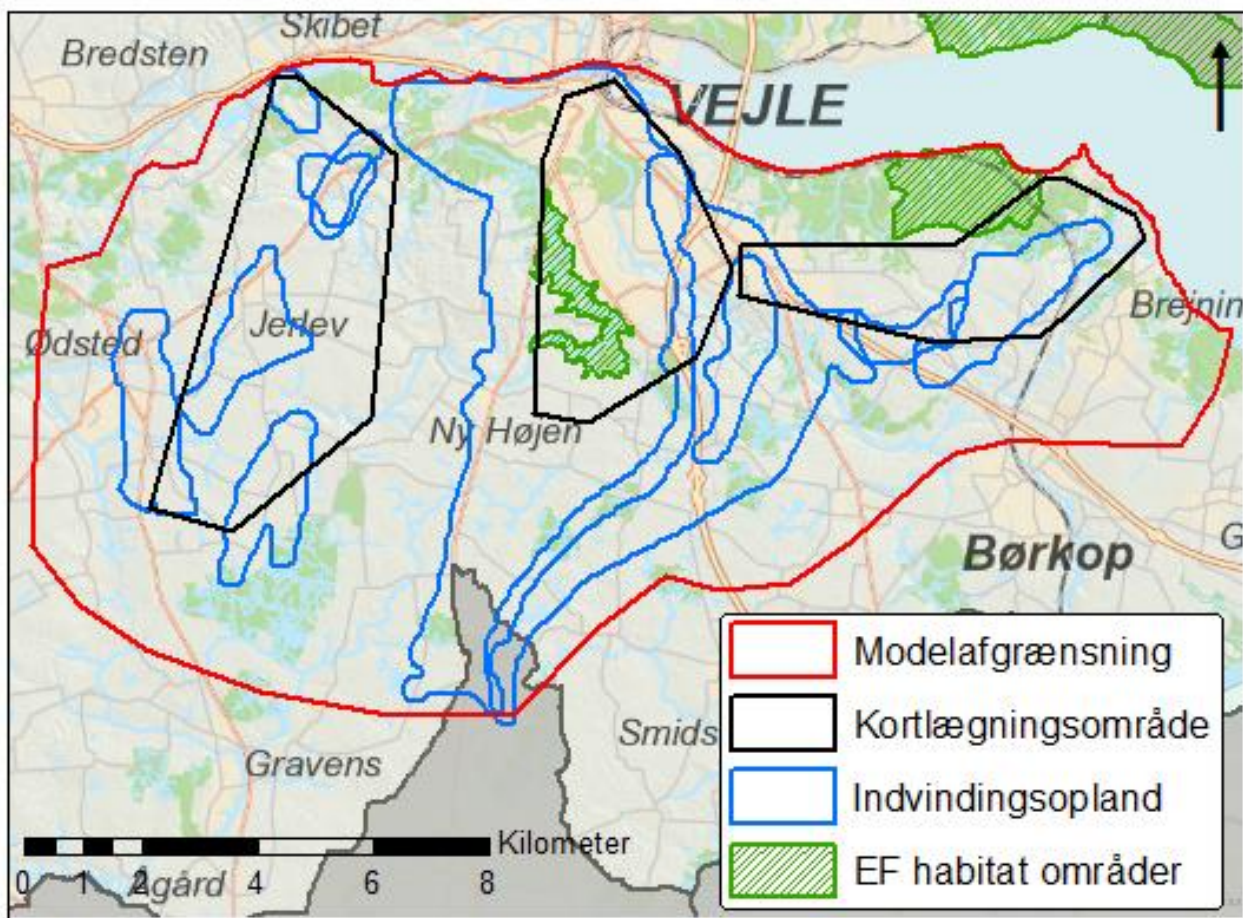


Modelafgrænsning, kortlægningsområder, indvindingsoplande og V1 og V2-kortlagte forureninger

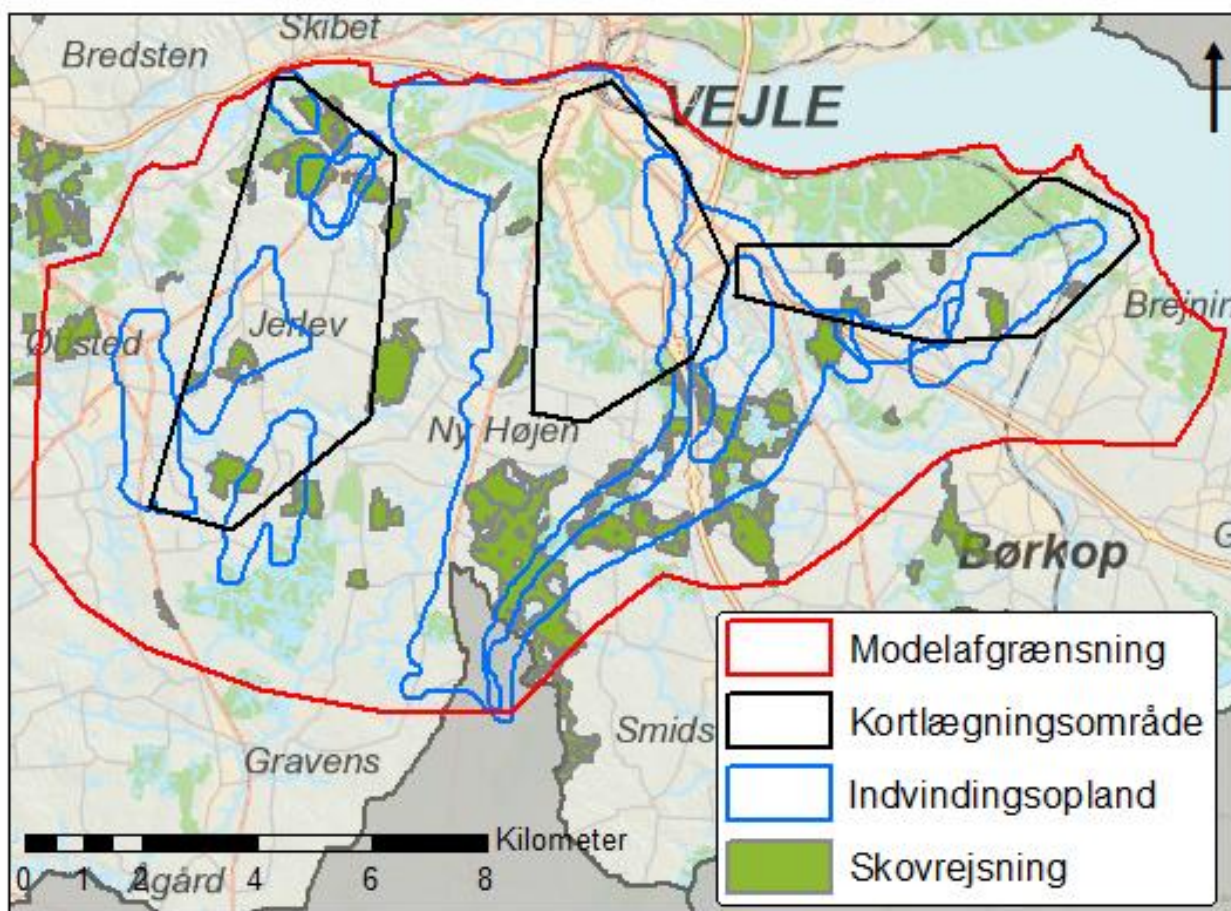


Modelafgrænsning, kortlægningsområder, indvindingsoplande og udspretningsarealer for spildevandsslam

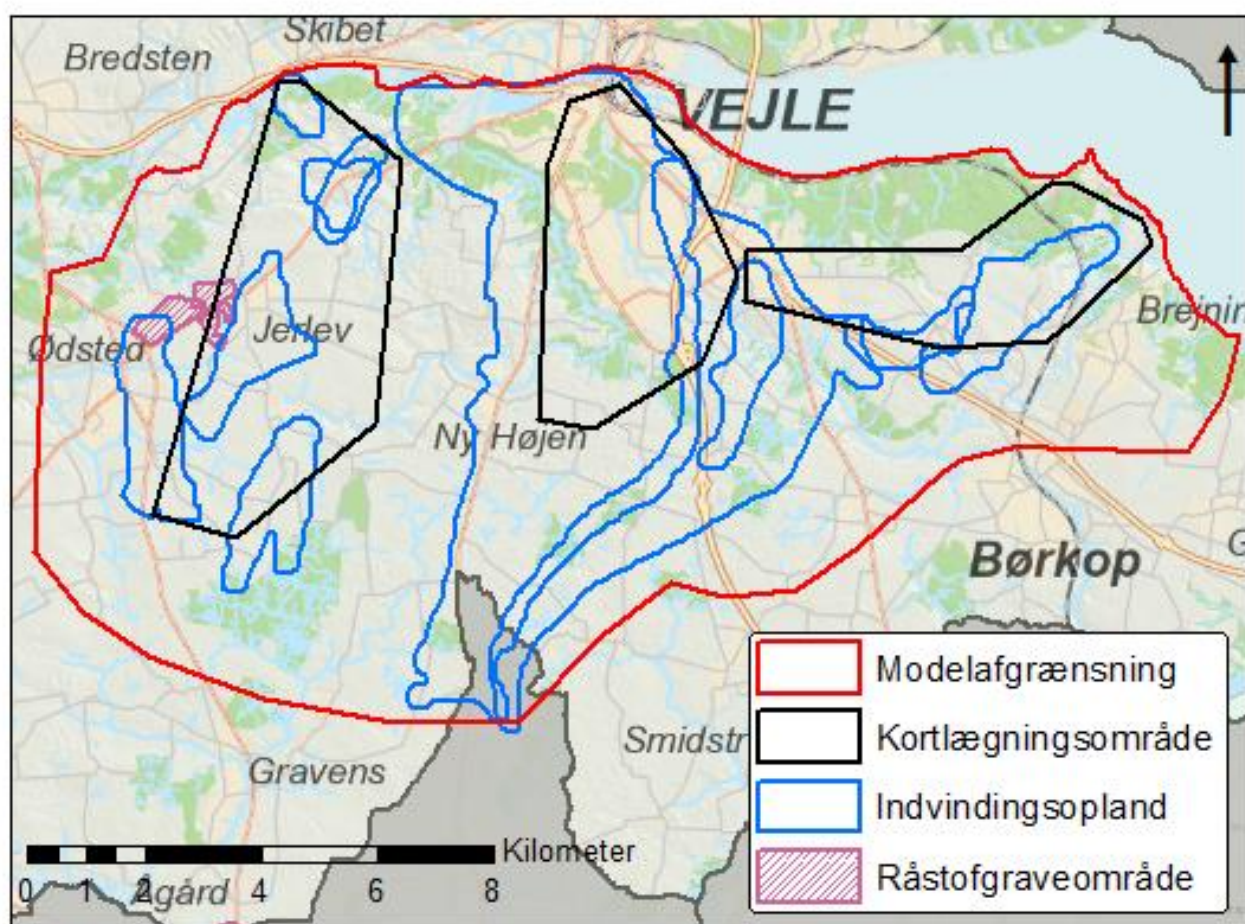




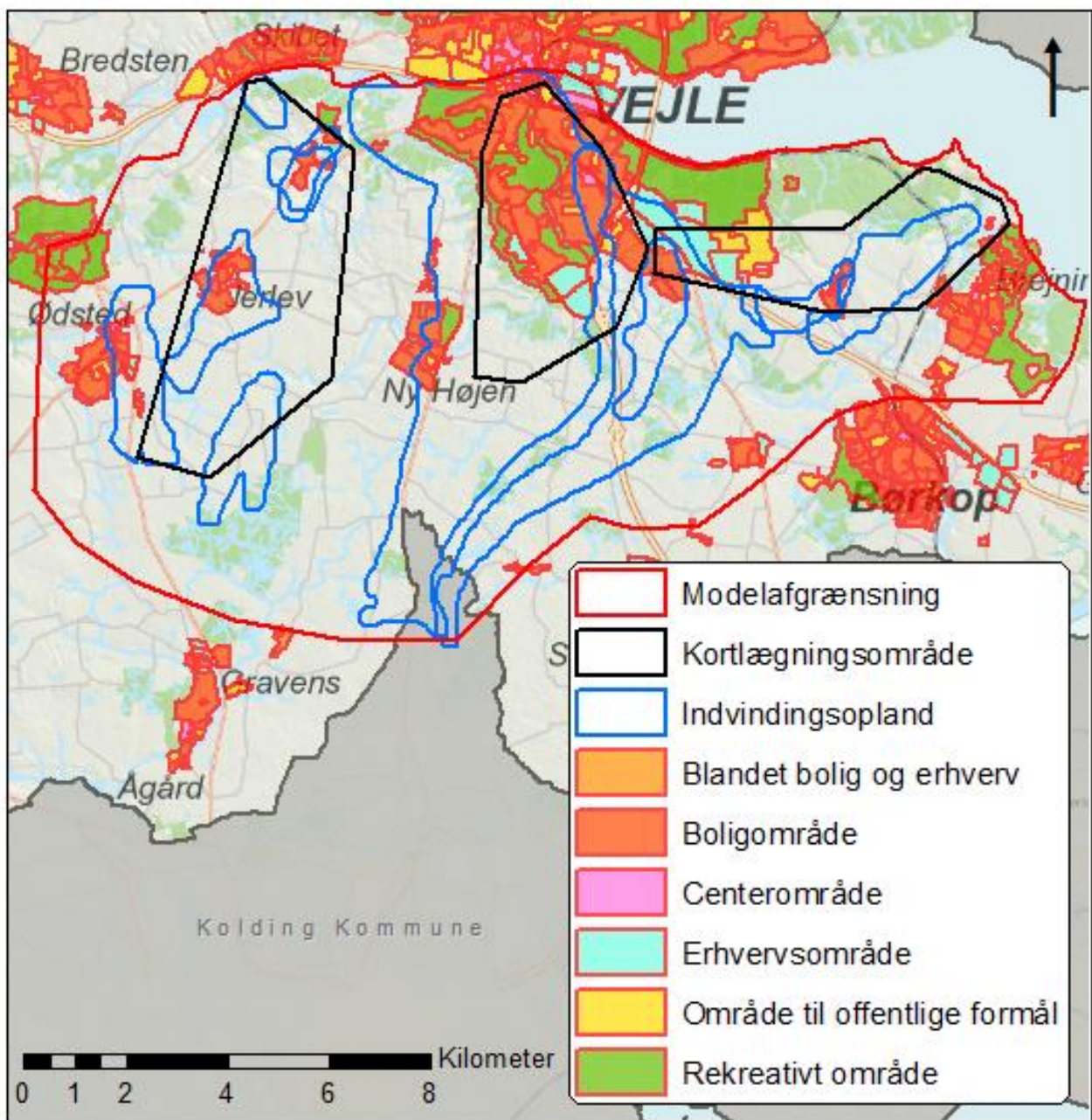
Modelafgrænsning, kortlægningsområder, indvindingsoplande og EF habitatområder (Natura 2000)



*Modelafgrænsning, kortlægningsområder, indvindingsoplande og ønskede skovrejsningsområder*



*Modelafgrænsning, kortlægningsområder, indvindingsoplande og råstofgraveområder*



Kommuneplanrammer

the 1990s, the number of people who are employed in the service sector has increased in all countries. In the Netherlands, the service sector has grown from 55% in 1980 to 70% in 1998.

As a result of the increasing number of people who are employed in the service sector, the number of people who are employed in the manufacturing sector has decreased. In the Netherlands, the manufacturing sector has shrunk from 35% in 1980 to 25% in 1998. The number of people who are employed in the agricultural sector has also decreased, from 10% in 1980 to 5% in 1998.

The number of people who are employed in the service sector has increased in all countries, but the rate of increase has been higher in some countries than in others.

In the Netherlands, the rate of increase has been higher than in most other countries. This is due to a number of factors, including the following:

1. The Netherlands has a high level of automation, which has led to a high level of productivity in the manufacturing sector.

2. The Netherlands has a high level of investment in research and development, which has led to a high level of innovation in the service sector.

3. The Netherlands has a high level of education, which has led to a high level of skills in the service sector.

4. The Netherlands has a high level of government spending on social services, which has led to a high level of demand for these services.

5. The Netherlands has a high level of government spending on infrastructure, which has led to a high level of demand for these services.

6. The Netherlands has a high level of government spending on health care, which has led to a high level of demand for these services.

7. The Netherlands has a high level of government spending on education, which has led to a high level of demand for these services.

8. The Netherlands has a high level of government spending on housing, which has led to a high level of demand for these services.

9. The Netherlands has a high level of government spending on transportation, which has led to a high level of demand for these services.

10. The Netherlands has a high level of government spending on culture, which has led to a high level of demand for these services.

11. The Netherlands has a high level of government spending on leisure, which has led to a high level of demand for these services.

12. The Netherlands has a high level of government spending on sports, which has led to a high level of demand for these services.

13. The Netherlands has a high level of government spending on tourism, which has led to a high level of demand for these services.

14. The Netherlands has a high level of government spending on international relations, which has led to a high level of demand for these services.

15. The Netherlands has a high level of government spending on defense, which has led to a high level of demand for these services.

16. The Netherlands has a high level of government spending on justice, which has led to a high level of demand for these services.

17. The Netherlands has a high level of government spending on foreign aid, which has led to a high level of demand for these services.

18. The Netherlands has a high level of government spending on environmental protection, which has led to a high level of demand for these services.

19. The Netherlands has a high level of government spending on energy, which has led to a high level of demand for these services.

20. The Netherlands has a high level of government spending on science and technology, which has led to a high level of demand for these services.

21. The Netherlands has a high level of government spending on information and communication, which has led to a high level of demand for these services.

22. The Netherlands has a high level of government spending on health care, which has led to a high level of demand for these services.

23. The Netherlands has a high level of government spending on education, which has led to a high level of demand for these services.

