

BORERAPPORT
DGU arkivnr: 150. 899
Borested : Toftlund Vandværk
6520 Toftlund

Kommune : Tønder
Region : Syddanmark

Boringsdato : 19/8 1996

Boringsdybde : 174 meter

Terrænkote : 47 meter o. DNN

Brøndbore : Ribe Brøndboreforretning ApS

MOB-nr : 39909

BB-journr :

BB-bornr :

Prøver

- modtaget : 8/10 1996 antal : 101

- beskrevet : 8/10 1996 af : PK

- antal gemt : 70

Formål : Vandforsyningsboring

Kortblad : 1212IIINV

Datum : ED50

Anvendelse : Vandforsyningsboring

UTM-zone : 32

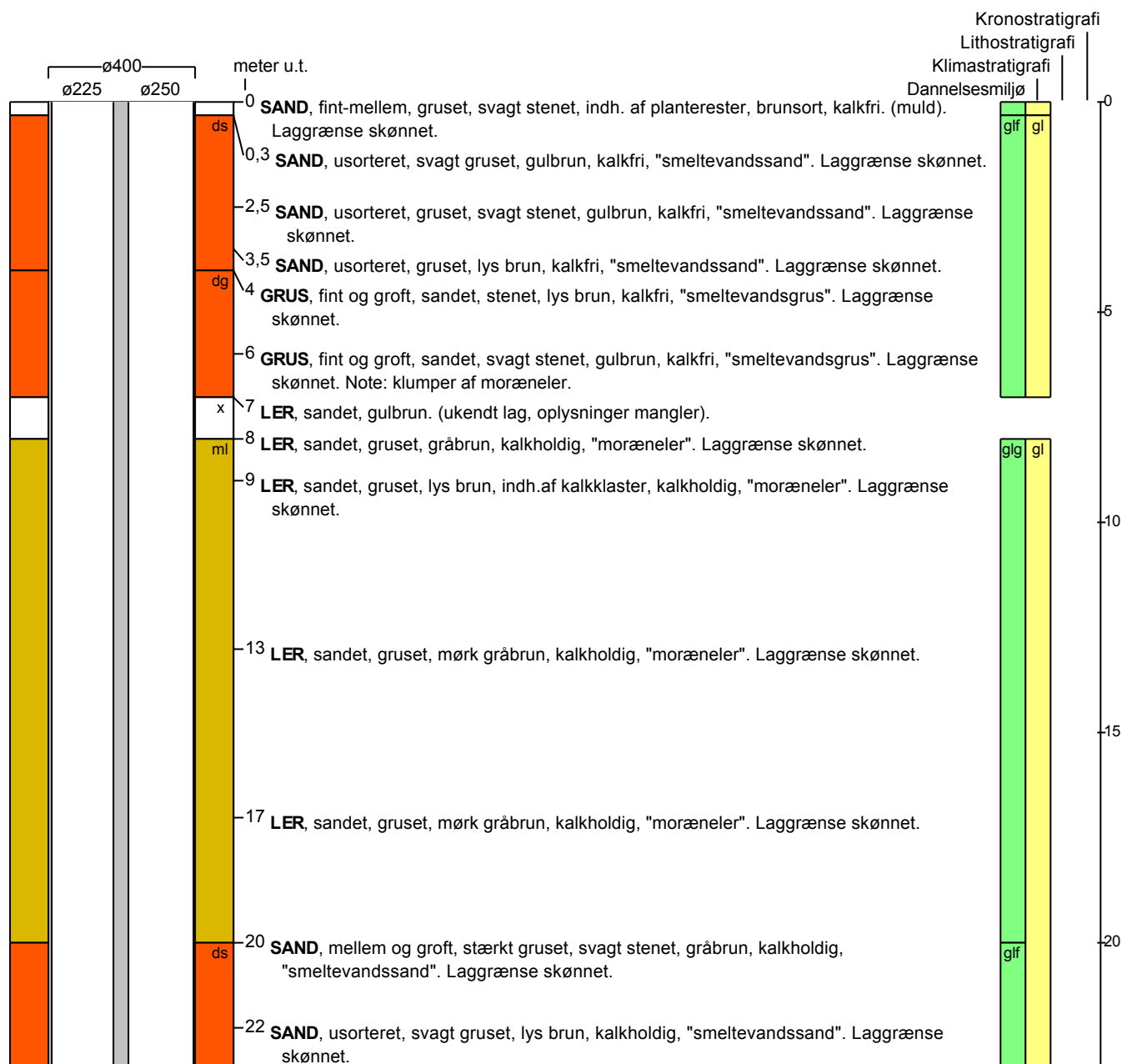
Koordinatkilde :

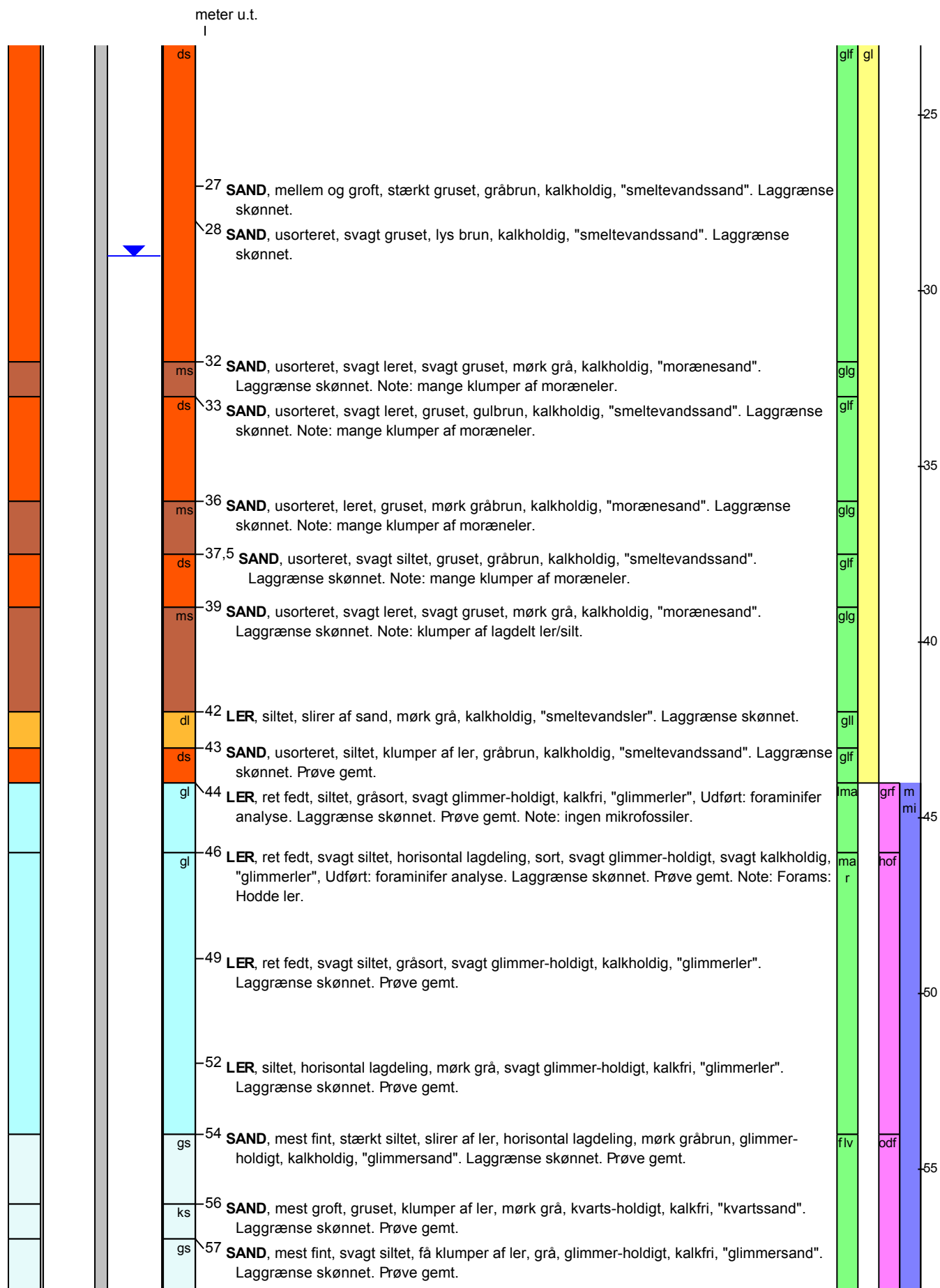
Boremethode : Lufthæve

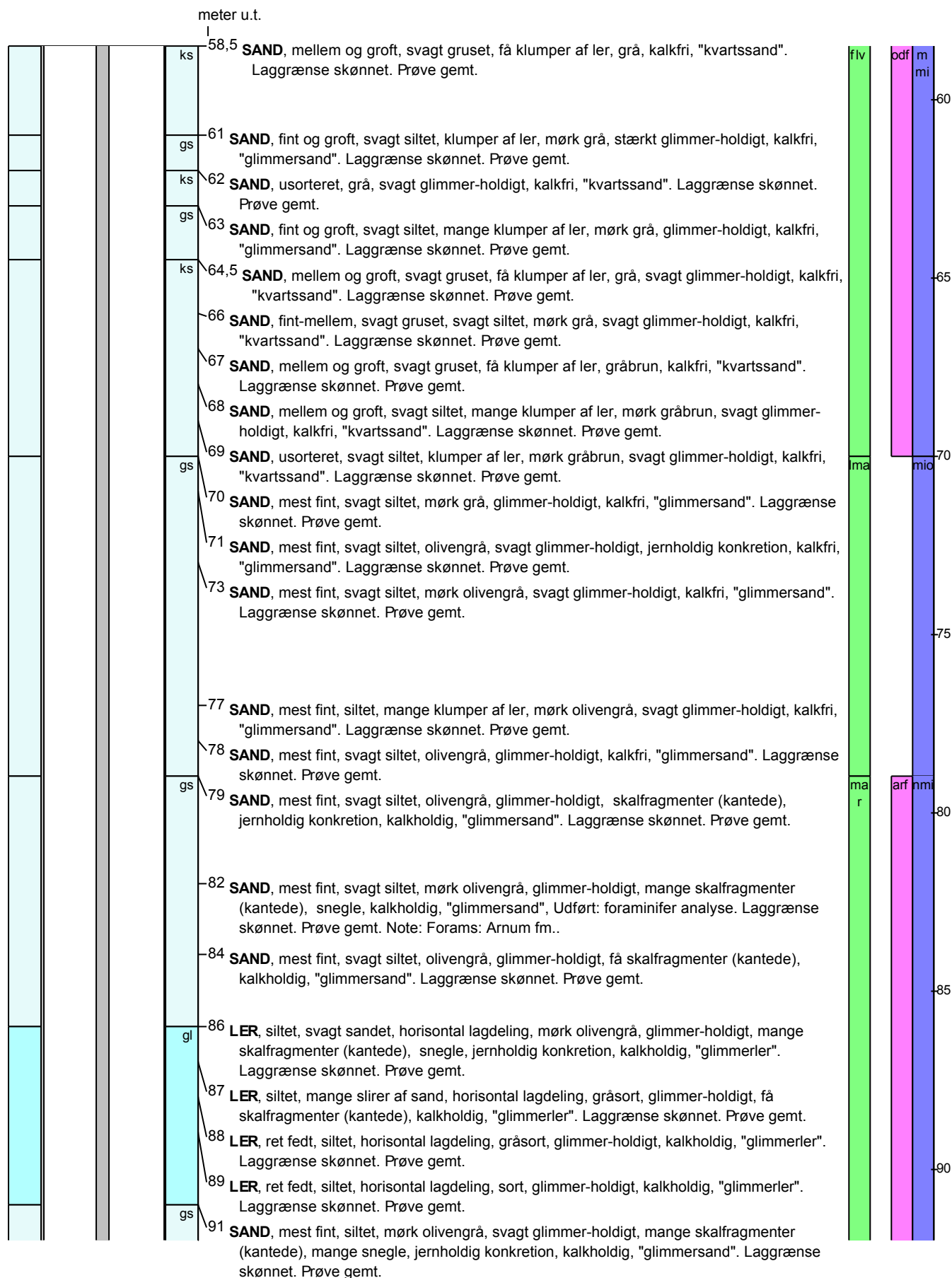
UTM-koord. : 503791, 6115765

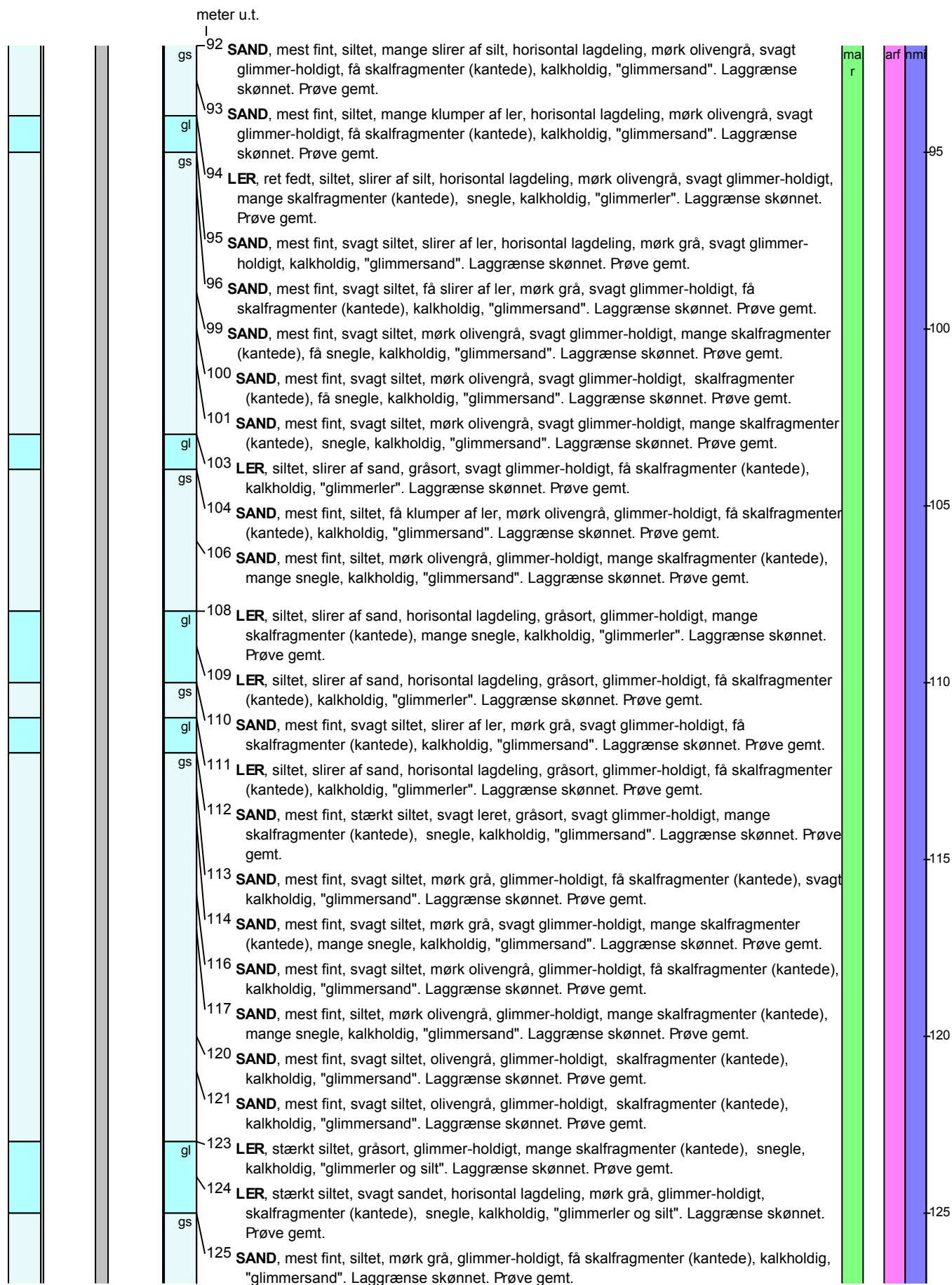
Koordinatmetode : Dig. på koor.bord

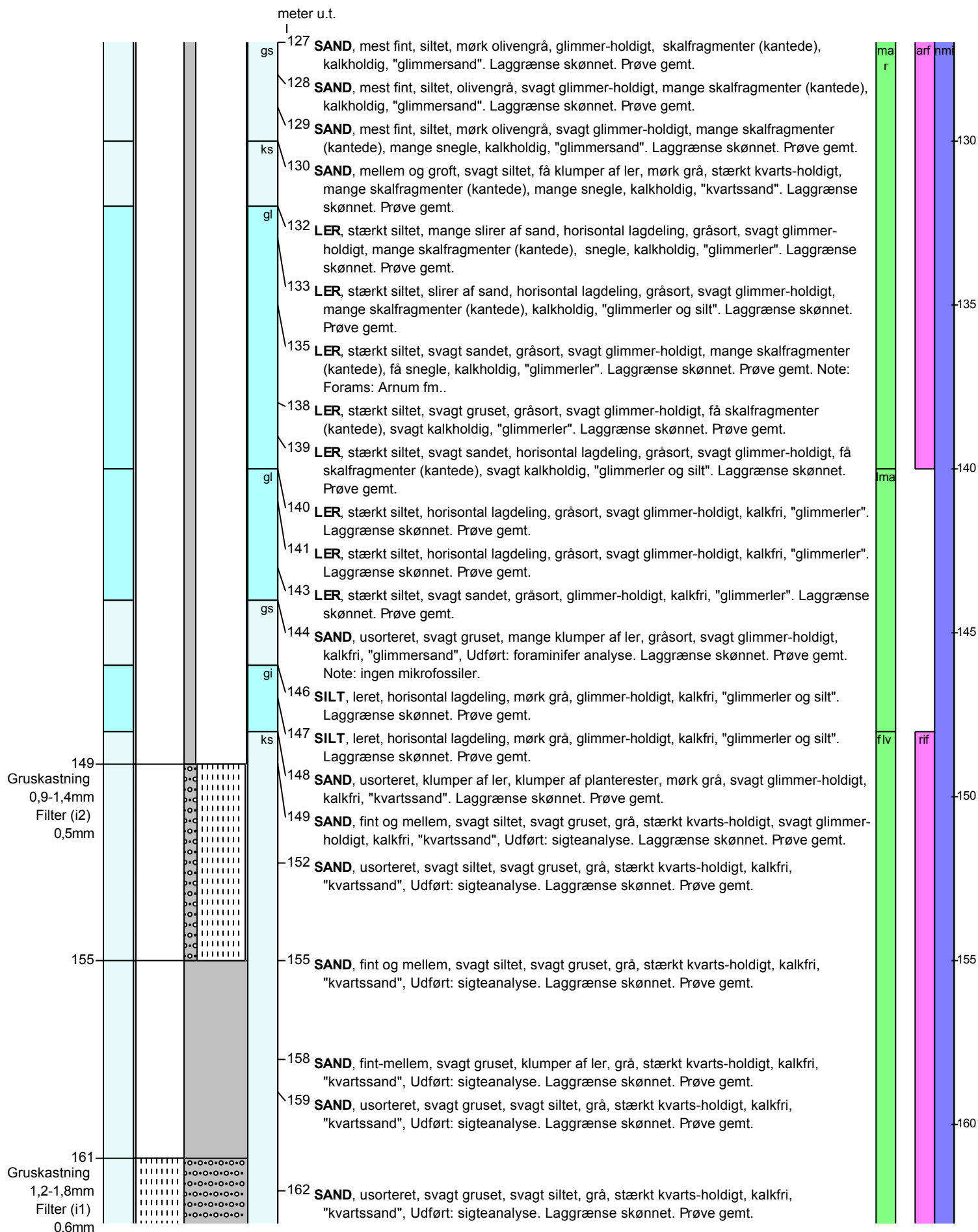
| Indtag 2 (seneste) | Ro-vandstand 29 meter u.t. | Pejledato 19/8 1996 | Ydelse 73 m ³ /t | Sænkning 2,1 meter | Pumpetid |
|--------------------|-------------------------------|------------------------|--------------------------------|-----------------------|----------|
|--------------------|-------------------------------|------------------------|--------------------------------|-----------------------|----------|

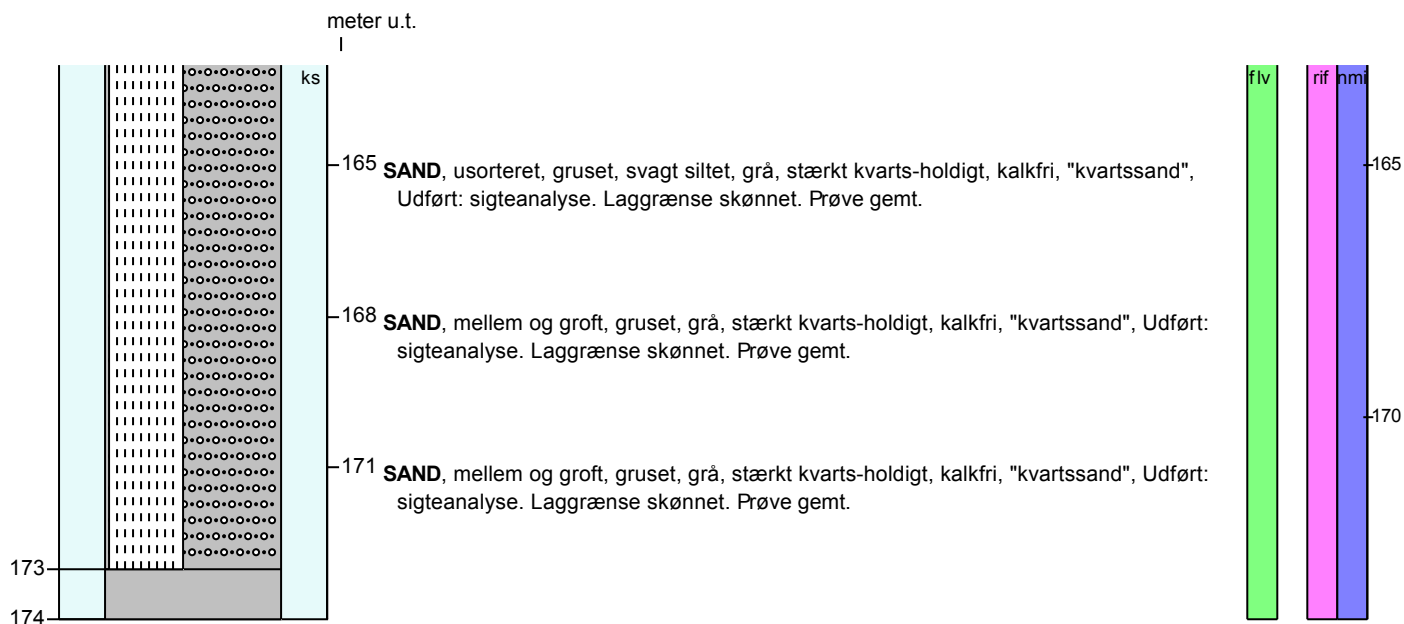
Notater : Bentonite: 11-17m, 47-53m, 140-147.3m. Forerør 225mm 155-161m.


BORERAPPORT
DGU arkivnr: 150. 899


BORERAPPORT
DGU arkivnr: 150. 899


BORERAPPORT
DGU arkivnr: 150. 899


BORERAPPORT
DGU arkivnr: 150. 899


BORERAPPORT
DGU arkivnr: 150. 899

Aflejringsmiljø - Alder (klima-, krono-, litho-, biostratigrafi)

| meter u.t. | | |
|------------|--------|---|
| 0 | - 0,3 | terrigen - postglacial |
| 0,3 | - 7 | glaciofluvial - glacial |
| 7 | - 8 | |
| 8 | - 20 | glacigen - glacial |
| 20 | - 32 | glaciofluvial - glacial |
| 32 | - 33 | glacigen - glacial |
| 33 | - 36 | glaciofluvial - glacial |
| 36 | - 37,5 | glacigen - glacial |
| 37,5 | - 39 | glaciofluvial - glacial |
| 39 | - 42 | glacigen - glacial |
| 42 | - 43 | glaciolakustrin - glacial |
| 43 | - 44 | glaciofluvial - glacial |
| 44 | - 46 | ant. limnisk-marin - mellem miocæn (ant. gram formation) |
| 46 | - 54 | marin - mellem miocæn (hodde formation) |
| 54 | - 70 | fluvial - fluvial/lakustrin - mellem miocæn (ant. odderup formation) |
| 70 | - 79 | ant. limnisk-marin - miocæn |
| 79 | - 140 | marin - nedre miocæn (arnum formation) |
| 140 | - 148 | ant. limnisk-marin - nedre miocæn |
| 148 | - 174 | fluvial - fluvial - nedre miocæn (ribe formation) |